



CULTURE  
and  
CHANGE

Fabian Horton

ConnectLaw  
College of Law

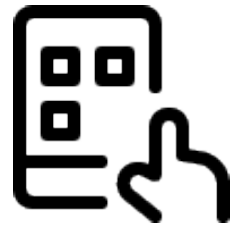
# CULTURE AND CHANGE



**WHAT IS TECHNOLOGY?**

## A broadened concept of technology

Technology is usually considered a device.



Something we can touch; hold in our hand.

# CULTURE AND CHANGE

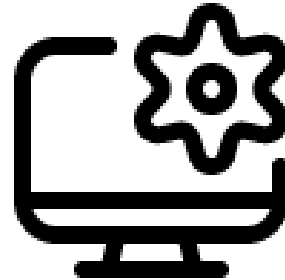
## A broadened concept of technology

But technology is much more than that.

It is  
data...



systems  
...



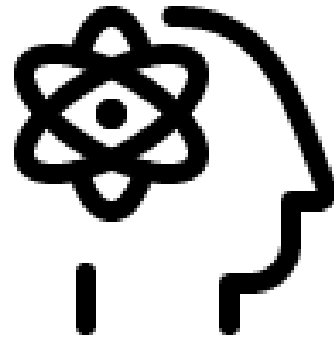
processes.



# CULTURE AND CHANGE

A broadened concept of technology

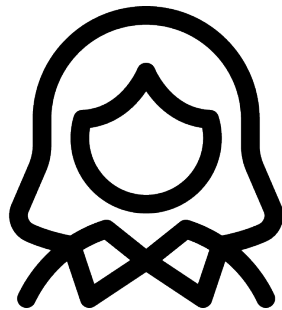
It is even a way to think.



The technological  
approach.

## A broadened concept of technology

Technology should be thought of as a relationship between...



+







CULTURE AND CHANGE



HYPERCONNECTIVITY  
AS  
CULTURE



Technological change

Create a culture resilient to  
technological change



# CULTURE AND CHANGE



Culture in Practice

Change by Design



# CULTURE AND CHANGE

‘human beings have their own goals and intentions, and products should help them to realize them in an optimal way.’

Verbeek



# CULTURE AND CHANGE

NewLaw

Modern

Traditional

BigLaw



# ASSESS THE SITUATION

---

People  
Resources  
Objectives



# CULTURE AND CHANGE

## CONSIDER YOUR VALUES

---



Collaborative  
Accessible  
Visible  
Kind



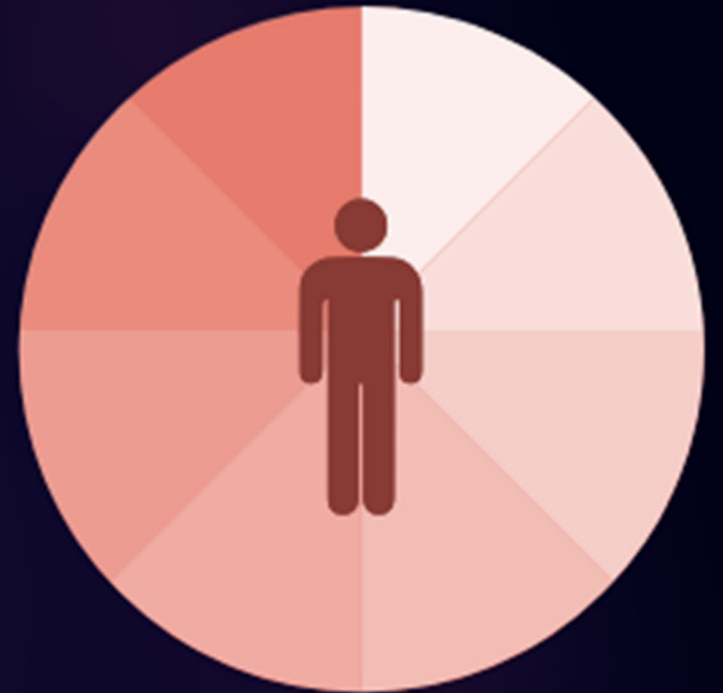
# CONSIDER YOUR SPACE

---

Physical

Virtual

Professional



# CULTURE AND CHANGE



## UNDERSTAND THE TOTAL

---

Connections  
Reach  
Motivations

# PARADIGM SHIFT

Move  
Embrace  
Repeat





# CULTURE AND CHANGE

A green rectangular sign is pinned to a wall with a colorful geometric pattern of triangles in shades of red, orange, and white. The sign has the text "this must be the place" written in white, lowercase, sans-serif font. The sign is held in place by four silver pushpins at the corners. The background wall features a complex pattern of overlapping triangles in various sizes and orientations, creating a dynamic and abstract visual field.

this  
must be  
the place

Thank you



CULTURE  
and  
CHANGE